



**Elixir Aircraft**

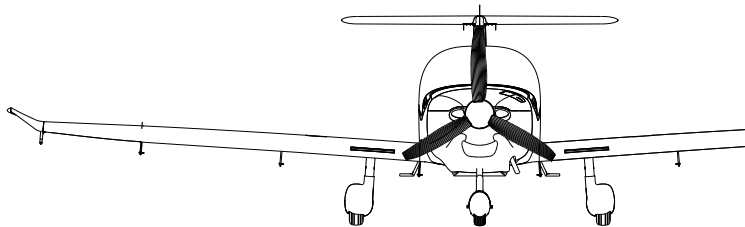
---

# ELIXIR

---

## Single EFIS – ADSB

Airplane Flight Manual Supplement – **SUP 03**





# Elixir Aircraft

Supplement Number ..... **03**

Supplement Title..... ..

## **ADSB IN / OUT**

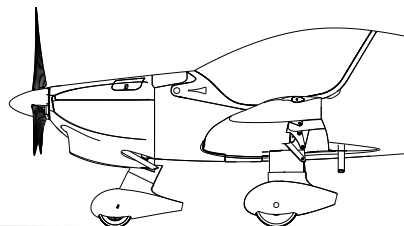
This manual includes the information that the conditions of certification require to provide to the pilot.

*THIS SUPPLEMENT MUST BE ATTACHED TO THE MAIN FLIGHT MANUAL WHEN THE CORRESPONDING SPECIFIC SYSTEM IS INSTALLED.*

*THE AIRPLANE MUST BE OPERATED ACCORDING TO THE INFORMATIONS AND LIMITATIONS CONTAINED IN THE HANDBOOK*

**LXR-AI-Rec-Manual-AFM SUP03 ADSB IN OUT –  
0000190 - Ed01 Rev02**

*All right reserved. Reproduction or disclosure to third parties of this document or any part thereof is not permitted, except with the prior and express written permission of Elixir Aircraft.*



# SUP 03-0. Document Management

## 0.1 Record of revisions

Updates are classified as “Editions” and “Revisions”.

An Edition (Ed.) is a change of the AFM Supplement, with an impact on the approved chapters. Any new Edition is EASA approved and mandatory.

A Revision (Rev.) is an update of the AFM Supplement, providing additional information, on non-approved chapters. Update your aeroplane documentation with new revisions at your own discretion

The Revision number is re-set to 01 at soon as a new Edition is released.

Rev. N°	Revised pages	EASA Approval date	Description of Revision
Ed.01 Rev01	all	MINOR CHANGE APPROVAL 10080769 30/11/2022	Initial release
Ed.01 Rev02	all	MINOR CHANGE APPROVAL n°10083461 08/12/2023	General layout and cosmetic improvements

*Intentionally left blank.*



**0.2 AFM sections overview**

SUP 03-0. Document Management .....0-3

SUP 03-1. General information ..... 1-1

SUP 03-2. Limitations .....2-1

SUP 03-3. Emergency Procedures .....3-1

SUP 03-4. Normal procedures .....4-1

SUP 03-5. Performance.....5-1

SUP 03-6. Weight & Balance .....6-1

SUP 03-7. Airplane & Systems Descriptions .....7-1

SUP 03-8. Airplane Handling, Servicing & Maintenance .....8-1

SUP 03-9. Supplements .....9-1

SUP 03-10. Supplemental procedures .....10-1

*Intentionally left blank.*



## **SUP 03-1. General information**

The present AFM supplement provides all the appropriate information necessary to safely and efficiently operate the aeroplane when equipped with the optional transponder GTX345R and associated equipment providing ADSB IN/OUT capabilities.

It is presented a self-contained, miniature Flight Manual following the same layout and sections as the basic AFM.

When the GTX345R system implies some modifications to the basic AFM, they will be mentioned in the relevant section. If there is no change, a statement to that effect will be made : “unchanged” means that the instructions or limitations from the basic AFM remain valid

*Intentionally left blank.*





**SUP 03-2. Limitations**

2.1 Systems & Equipment.....2-2



## 2.1 Systems & Equipment

### Warning

ADSB traffic display is only an aid to situational awareness. Visual flight rules always prevail for traffic separation.

**SUP 03-3. Emergency Procedures**

3.1 Introduction .....3-2

3.2 G3X failures and annunciation .....3-2

3.2.1 TRAFFIC .....3-2



## 3.1 Introduction

This section provides instructions for ADSB traffic information in case of emergency.

## 3.2 G3X failures and annunciation

### 3.2.1 TRAFFIC

When amber TRAFFIC CAS message appears:

1.	Outside traffic	<i>Visually acquire the traffic to see and avoid</i>
----	-----------------	--

#### Warning

ADSB traffic display does not show all traffic. Always look outside to ensure traffic separation.

## **SUP 03-4. Normal procedures**

No change.

*Intentionally left blank.*



## **SUP 03-5. Performance**

No change.

*Intentionally left blank.*





## **SUP 03-6. Weight & Balance**

No change.

*Intentionally left blank.*



# SUP 03-7. Airplane & Systems Descriptions

7.1 Introduction .....7-2

7.2 ADSB traffic display .....7-2



## 7.1 Introduction

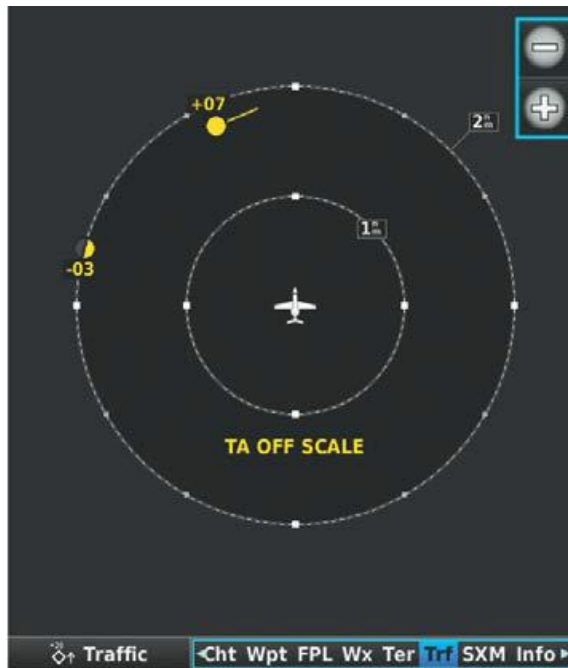
The ADSB IN and OUT optional capability is ensured by the following elements:

- Garmin GTX345R transponder
- Approved GA35 antenna
- GAE12 altitude encoder

This option allows ADSB-capable aircraft to communicate automatically position and flight information to each other to enhance pilot's situational awareness and traffic separation.

## 7.2 ADSB traffic display

The TRAFFIC page displays all the detected traffic:



When a traffic advisory is detected, the following information is available:

- An amber "TRAFFIC" is displayed in the PFD showing traffic side



- The traffic popup widow appears in the MAP page showing traffic position



- A "TRAFFIC" voice alert is generated once for each detected traffic.

For more detailed information regarding traffic feature, please refer to Garmin G3X documentation.

*Intentionally left blank.*



## **SUP 03-8. Airplane Handling, Servicing & Maintenance**

No change.

*Intentionally left blank.*





## **SUP 03-9. Supplements**

Not applicable.

*Intentionally left blank.*



## **SUP 03-10. Supplemental procedures**

No Change

*Intentionally left blank.*



*Intentionally left blank.*





# Elixir Aircraft

Aéroport de La Rochelle - Ile de Ré – LFBH

Lat: 46° 10' 45" N – Long: 001° 11' 43" W

Rue du Jura

17 000 La Rochelle - France

[www.elixir-aircraft.com](http://www.elixir-aircraft.com)

